



1625

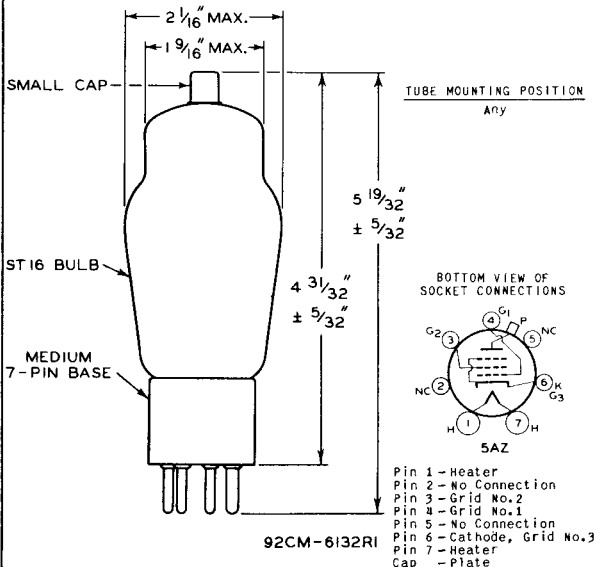
1625

TRANSMITTING BEAM POWER AMPLIFIER

| | | |
|--|-----------------------------|------------------|
| Heater | Coated Unipotential Cathode | |
| Voltage | 12.6 ($\pm 10\%$) | a-c or d-c volts |
| Current | 0.45 | amp. |
| Transconductance for plate cur. of 72 ma. | 6000 approx. | μmhos |
| Grid-Screen Mu-Factor | 8 | |
| Direct Interelectrode Capacitances: | | |
| Grid to Plate (with external shielding) | 0.2 max. | μf |
| Input | 11 | μf |
| Output | 7 | μf |
| Overall Length | 5-19/32" \pm 5/32" | ← |
| Seated Height | 4-31/32" \pm 5/32" | ← |
| Maximum Diameter | 2-1/16" | |
| Bulb | ST-16 | |
| Cap | Small | |
| Base | Medium 7-Pin, Micanol | |

*Maximum Ratings Are Absolute Values***MAXIMUM CCS and ICAS RATINGS with TYPICAL OPERATING CONDITIONS**

These are the same as those for Type 807 except that maximum d-c heater-cathode potential is 135 volts. Curves under the 807 also apply to the 1625.



← Indicates a change.

DEC. 15, 1944

RCA VICTOR DIVISION
RADIO CORPORATION OF AMERICA, HARRISON, NEW JERSEY

DATA