



172

**THYRATRON**

METAL MERCURY-VAPOR TETRODE

172

**Electrical:**DATA

	<u>Continuous Service</u>		<u>Welder-Control Service</u>		
Heater, for Unipotential Cathode:					
Voltage* . . . . .	5.0	5.0	5.0	5.5	volts
Current . . . . .	10.0	10.0	10.0	11.0	amp
Direct Interelectrode Capacitance (Approx.):					
Grid No.1 to Anode	0.07	0.07	0.07	0.07	μf
Peak Voltage Drop . .	16	16	16	16	volts
Approx. Control Characteristics:					
Anode Voltage . . . .	100	2000	100	2000	volts
Grid-No.1 Voltage . .	+1.0	-14	+1.0	-14	volts
Grid-No.2 Voltage . .	0	0	0	0	volts
Ionization Time (Approx.)	10	10	10	10	μsec
Deionization Time (Approx.)	1000	1000	1000	1000	μsec

**Mechanical:**

Mounting Position . . . . .	Vertical, Radiator Down
Overall Rigid Length . . . . .	10-11/16" ± 1/16"
Greatest Radius . . . . .	2-5/8"
Terminals . . . . .	See Outline Drawing

**Maximum Ratings, Absolute Values:**

	<u>Continuous Service</u>	<u>Welder-Control Service</u>	
PEAK FORWARD ANODE VOLT. .	2000 max.	750 max.	volts
PEAK INVERSE ANODE VOLT. .	2000 max.	750 max.	volts
GRID-No.1 (CONT. GRID) VOLT.:			
Before Conduction . . . . .	-1000 max.	-1000 max.	volts
During Conduction . . . . .	-1.0 max.	-1.0 max.	volts
GRID-No.2 (SHL'D GRID) VOLT.:			
Before Conduction . . . . .	-300 max.	-300 max.	volts
During Conduction . . . . .	-5.0 max.	-5.0 max.	volts
INSTANTANEOUS ANODE CUR.:			
Below 25 Cycles . . . . .	13.0 max.	13.0 max.	amp
25 Cycles and Higher. . . . .	4.0 max.	7.7 max.	amp
AVERAGE ANODE CURRENT** . .	6.4 max.	2.5 max.	amp
SURGE ANODE CURRENT for			
0.1 sec. max. . . . .	400 max.	400 max.	amp
INSTANTANEOUS GRID-No.1 CUR.	1.0 max.	1.0 max.	amp
AVERAGE GRID-No.1 Cur.** . .	0.25 max.	0.25 max.	amp
INSTANTANEOUS GRID-No.2 CUR.	2.0 max.	2.0 max.	amp
AVERAGE GRID-No.2 Cur.** . .	0.5 max.	0.5 max.	amp
COND.-MERCURY TEMP. RANGE <sup>▲</sup>	40 - 80	30 - 95	°C

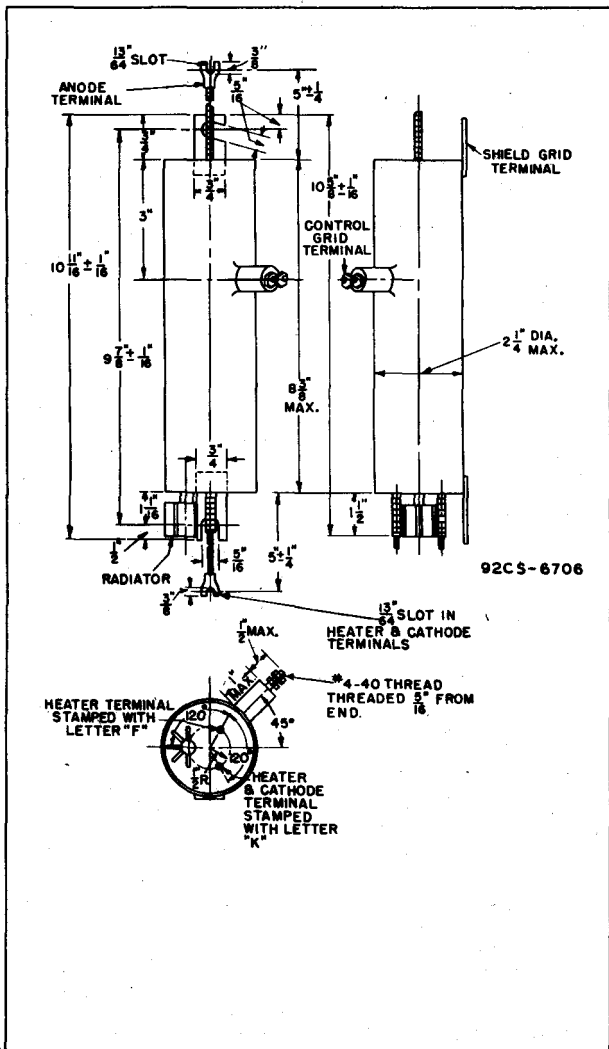
\* Must be applied at least 5 minutes before anode voltage is applied.

\*\* Averaged over any 15-second interval.

▲ Recommended condensed-mercury temperature 40°C.



# THYRATRON



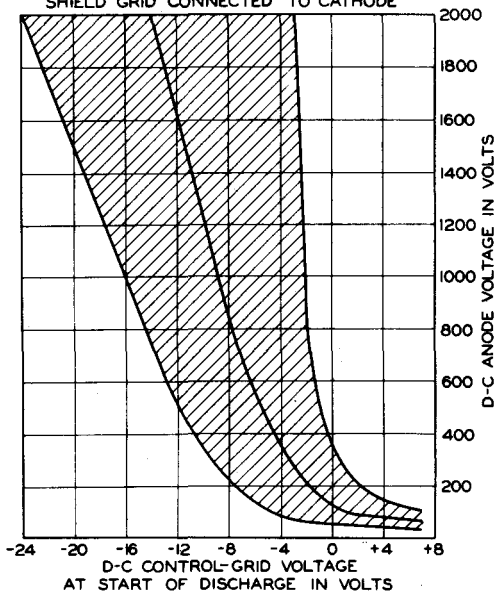


172

# THYRATRON

172

TYPICAL CONTROL CHARACTERISTIC  
SHADED AREA SHOWS RANGE OF CHARACTERISTIC  
CONDENSED-MERCURY TEMP. 40°C  
SHIELD GRID CONNECTED TO CATHODE



92CS-6698