



6AL7-GT ELECTRON-RAY TUBE

6AL7-GT

INDICATOR TYPE

GENERAL DATA

Electrical:

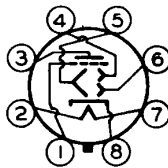
Heater, for Unipotential Cathode:

Voltage 6.3 ac or dc volts
Current 0.15 amp

Mechanical:

Mounting Position Any
Maximum Overall Length 3-1/16"
Maximum Seated Length 2-1/2"
Maximum Diameter 1-9/32"
Bulb T-9
Base Intermediate-Shell Octal 8-Pin
Basing Designation for BOTTOM VIEW 8CH

Pin 1-Grid
Pin 2-Heater
Pin 3-Target
Pin 4-Deflecting
Electrode
No.2



Pin 5-Deflecting
Electrode
No.3
Pin 6-Deflecting
Electrode
No.1
Pin 7-Heater
Pin 8-Cathode

INDICATOR SERVICE

Maximum Ratings, Design-Center Values:

TARGET VOLTAGE { 365 max. volts
220 min. volts
PEAK HEATER-CATHODE VOLTAGE:
Heater negative with respect to cathode 90 max. volts
Heater positive with respect to cathode 90 max. volts

Typical Operation and Characteristics:

Target Voltage 315 volts
Deflecting-Electrode-No.1 Voltage* 0 volts
Deflecting-Electrode-No.2 Voltage* 0 volts
Deflecting-Electrode-No.3 Voltage* 0 volts
Grid Voltage 0 volts
Cathode-Bias Resistor (Approx.) 3300 ohms
Grid Voltage for
Pattern cutoff (Approx.) -7 volts
Deflection Sensitivity (Approx.)*. 1 mm/volt

* With tube mounted horizontally and pins 4 & 8 in vertical plane (Pin 4 on top), deflecting electrode No.1 controls top left-hand section of pattern, deflecting electrode No.2 controls top right-hand section of pattern, deflecting electrode No.3 controls bottom section of pattern.

For first mm deflection (Deflecting Electrodes No.1 & No.2).

6AL7-GT



6AL7-GT

ELECTRON-RAY TUBE

PATTERN SEQUENCE DURING TUNING

CONTROL VOLTAGE SOURCE	CIRCUIT (NEXT PAGE)	OFF CHANNEL (-)	ON TUNE	ON CHANNEL OFF TUNE (+)	OFF CHANNEL (+)
DISCRIMINATOR (FM)	FIGS. 1 AND 2				
DISCRIMINATOR AND SQUELCH (FM)	FIG. 3				
DISCRIMINATOR AND LIMITER (FM)	FIG. 4				
AVC (FM)	FIG. 5				

FEB. 2, 1949

TUBE DEPARTMENT
RADIO CORPORATION OF AMERICA, HARRISON, NEW JERSEY

92CS-7171



6AL7-GT

ELECTRON-RAY TUBE

6AL7-GT

TYPICAL CIRCUITS

FIG. 1

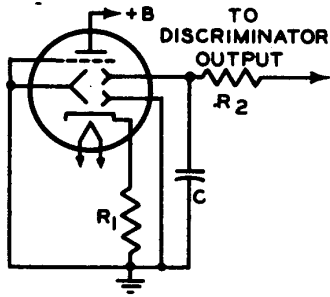


FIG. 2

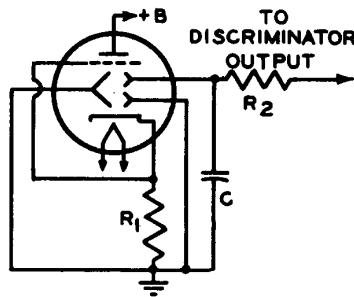


FIG. 3

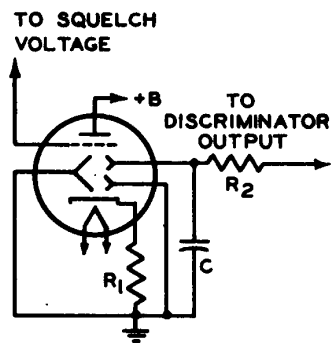


FIG. 4

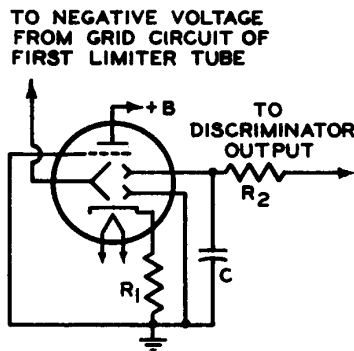
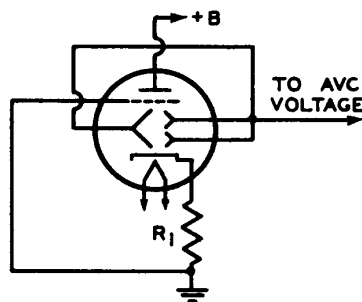


FIG. 5



+B = 315 VOLTS APPROX.
C = 0.05 μ F

R₁ = 3300 OHMS
R₂ = 1.0 MEGOHM

92CS-7169